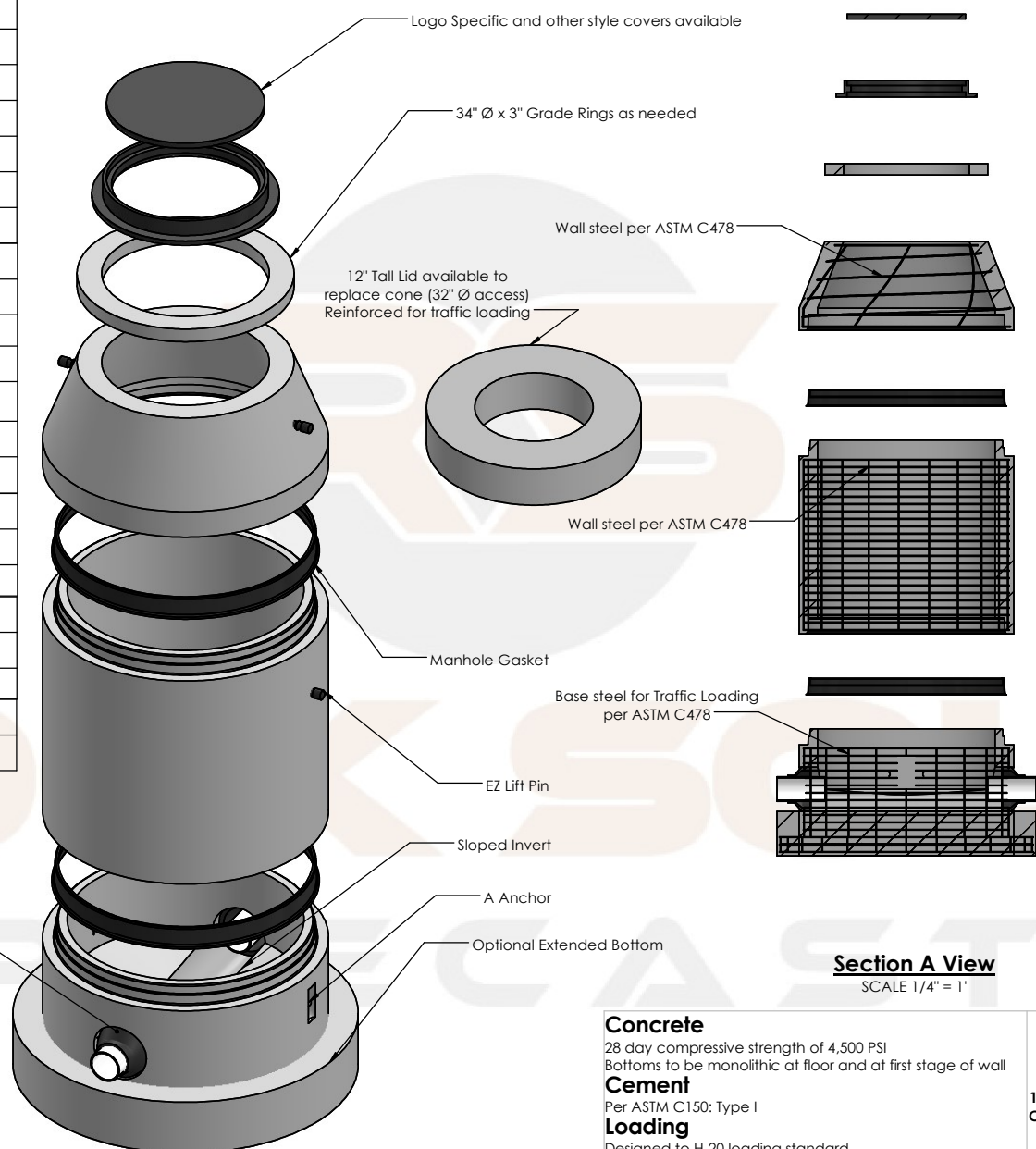
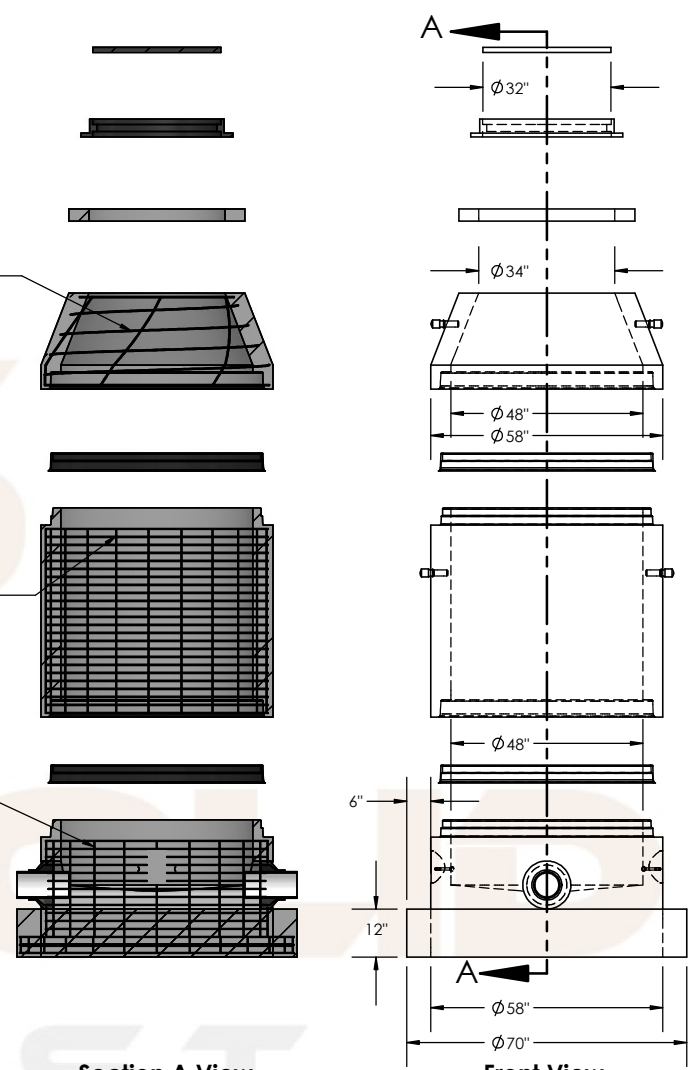


Description	Product Code	Weight (Lbs.)
<b>Bases</b>		
48" Ø x 18" Tall Basic	4818B	5,110
48" Ø x 18" Tall Custom	4818BSP	Varies
48" Ø x 24" Tall Basic	4824B	5,550
48" Ø x 24" Tall Custom	4824BSP	Varies
48" Ø x 36" Tall Basic	4836B	6,430
48" Ø x 36" Tall Custom	4836BSP	Varies
<b>Risers</b>		
48" Ø x 24" Tall Basic	4824R	1,740
48" Ø x 24" Tall Custom	4824RSP	Varies
48" Ø x 36" Tall Basic	4836R	2,620
48" Ø x 36" Tall Custom	4836RSP	Varies
48" Ø x 48" Tall Basic	4848R	3,500
48" Ø x 48" Tall Custom	4848RSP	Varies
<b>Cones</b>		
48" Ø/34" Ø x 24" Tall	4824C	1,700
48" Ø/34" Ø x 34" Tall	4834C	2,500
<b>Cast Iron</b>		
32" Ø x 4.5" Tall Ring	32RC4	220
32" Ø Cover	32RC4	280
<b>Slab Top (Lid)</b>		
48" Ø/32" Ø x 12" Tall	48ST1232	1920



**Exploded Side View**  
Scale: 1/3" = 1'



**Section A View**  
SCALE 1/4" = 1'

**Front View**  
SCALE 1/4" = 1'

Options
Thane Coat or Equivalent
Xypex or Equivalent
Bio-San

**Concrete**  
28 day compressive strength of 4,500 PSI  
Bottoms to be monolithic at floor and at first stage of wall

**Cement**  
Per ASTM C150: Type I

**Loading**  
Designed to H-20 loading standard

**Design**  
Per ASTM C478  
Standard configurations verified for up to 20 feet

**Cast Iron**  
Meets ASTM A48 and CL35B Standards

**Reinforcement**  
Rebar per ASTM A615 Grade 60  
Wire Mesh per ASTM A1064

**PROPRIETARY AND CONFIDENTIAL**  
THE INFORMATION CONTAINED IN THIS DRAWING IS THE SOLE PROPERTY OF ROCK SOLID PRECAST, LP. ANY REPRODUCTION IN PART OR AS A WHOLE WITHOUT THE WRITTEN PERMISSION OF ROCK SOLID PRECAST, LP IS PROHIBITED.

**Rock Solid Precast, L.P.**

11393 Sleepy Hollow Road PO Box 8066  
Conroe, TX 77385 The Woodlands, TX 77387  
(281) 364-7474

TITLE  
48" Ø Typical Sanitary Manhole  
(Various Options)

DWG. NO. 48SAN Drawing  
DRAWN CHECKED WEIGHT  
MKK ALB Varies